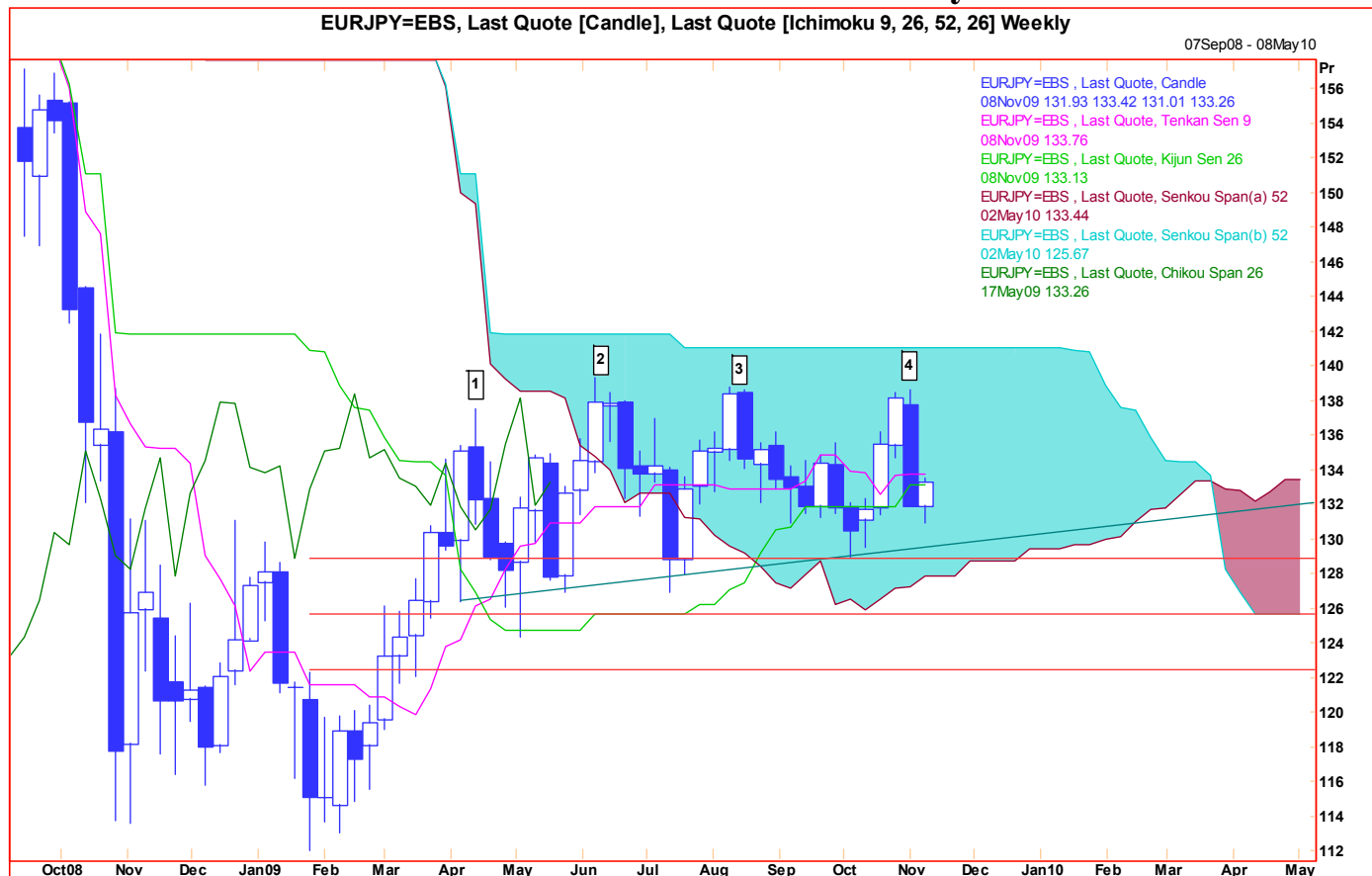


**Technical Analysis**

**02 November 2009  
Monthly Outlook for EUR/JPY**



**Comment:** October produced a fourth (and hopefully final) re-test of increasingly important resistance around 138.00. With a quadruple 'top' here, and broadening tops in other Yen crosses, we feel that last week's price action marks the start of a move lower. We might hold within the upper half of the broad band that has held since April (roughly 126.00 to 138.00) for another three weeks, but towards year-end expect a decisive break lower. A weekly close below 127.50 should trigger a sharp slide to 118.00.

A weekly close clearly above 135.00 forces us to review.

**Chart Levels:**

Support	Resistance	Direction of Trade
131.00	134.00	
129.00*	135.50	
128.00	136.00	
127.00*	137.00	
126.00*	139.26**	

Produced by London Branch - Nicole Elliott +44-20-7786-2509

The information contained in this paper is based on or derived from information generally available to the public from sources believed to be reliable. No representation or warranty is made or implied that it is accurate or complete. Any opinions expressed in this paper are subject to change without notice. This paper has been prepared solely for information purposes and if so decided, for private circulation and does not constitute any solicitation to buy or sell any instrument, or to engage in any trading strategy.

Charts provided by Reuters.