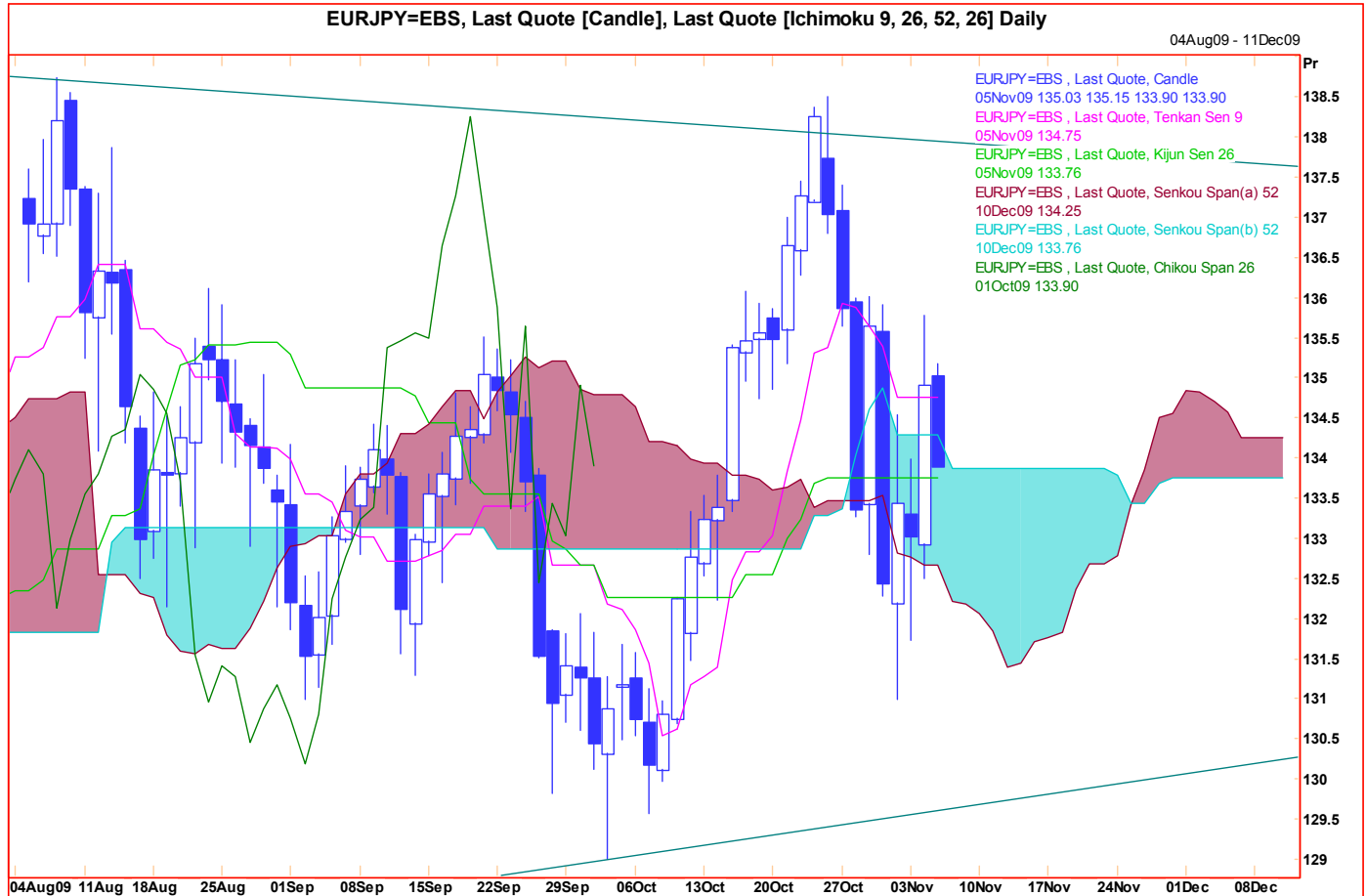


Technical Analysis

05 November 2009
EUR/JPY



Comment: Thrashing around in the middle of this year's broad range. With momentum bearish, the Euro not oversold against the Yen, and a small 'spike high' last night should sent this pair back down to 132.00, and eventually more.

Strategy: Attempt shorts at 134.00; stop above 135.85. Short term target 132.00, then 131.00, eventually another big slide lower still.

Chart Levels:

Support	Resistance	Direction of Trade
133.75	134.75	
133.25	135.15	
132.50	135.76*	
132.00	136.00	
131.00*	137.00	

Produced by London Branch - Nicole Elliott +44-20-7786-2509

The information contained in this paper is based on or derived from information generally available to the public from sources believed to be reliable. No representation or warranty is made or implied that it is accurate or complete. Any opinions expressed in this paper are subject to change without notice. This paper has been prepared solely for information purposes and if so decided, for private circulation and does not constitute any solicitation to buy or sell any instrument, or to engage in any trading strategy.

Charts provided by Reuters.