

**Weekly Technical Commentary**

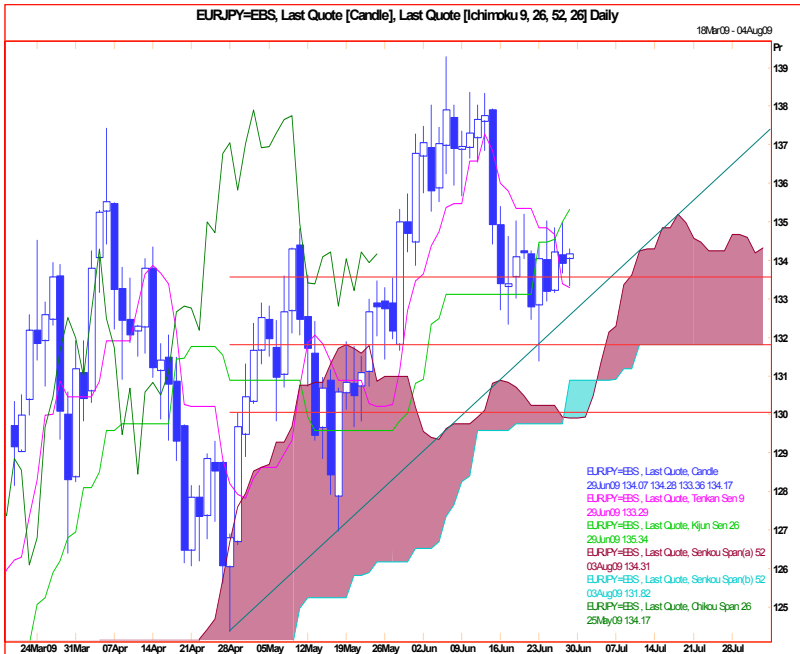
**29 June 2009**

Links: <http://www.mizuho-sc.com/>

Bloomberg Page: MIZH

Website: <http://www.mizuho-cb.co.uk/>

**EUR/JPY Chart Levels: Support 133.00..132.00..131.40..130.00. Resistance 135.00..135.50..137.50..139.26**

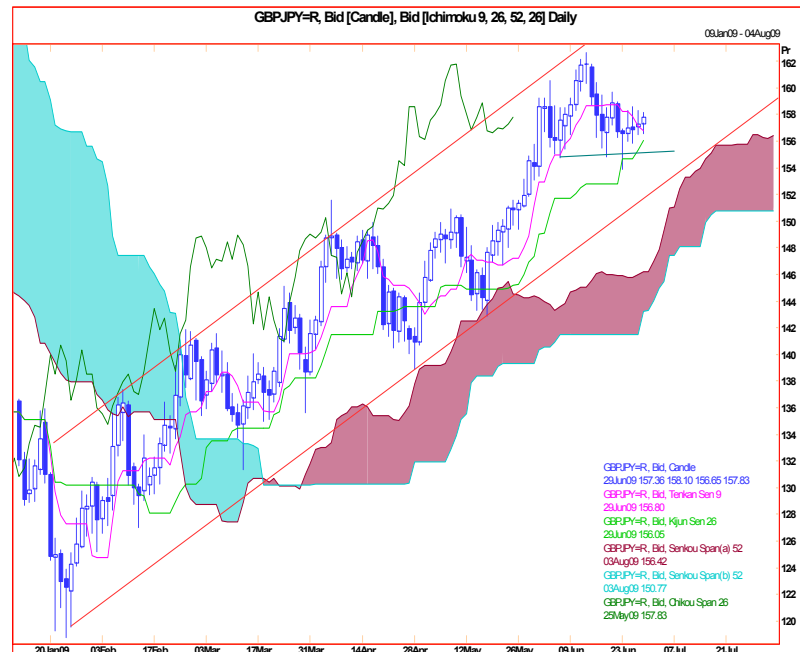


**This week**  
→

**This month**  
→

Tricky as Yen crosses consolidate under this year's highs but above trendline and retracement support. For this particular pair, if the range since March has been roughly 126.00 to 138.00, then its mid-point is 132.00 and prices should hold above here for another week. Then we shall probably favour a dip lower but we must point out that our level of confidence in an across the board move of this type is low. Therefore some time in July we favour a drop to 125.50/126.00. Note that bullish momentum has all but evaporated and the Euro is not oversold against the Yen. One-month at-the-money implied volatility has not picked up as we had predicted but we have not given up hope.

**GBP/JPY Chart Levels: Support 155.000..154.00..152.80..150.00. Resistance 158.55..159.65..160.50..162.60.**



**This week**  
→

**This month**  
→

As we had warned earlier this month, further gains for this currency pair may prove difficult as it struggles with resistance from the weekly Ichimoku 'cloud'. It has stalled ahead of 163.00, at the upper edge of the 'channel' that has held this year, forming a tiny potential 'head-and-shoulders top' over the last four weeks. Moving averages look set to cross to bearish, and should do so on a daily close below the 'neckline' at 155.00. This should lead to a sudden drop to 150.00, a level many feel is 'fair' for this cross. Later we shall allow for a slower leg down to 146.00. Note that Yen crosses with minor currencies look more top-heavy than the majors, hinting these may lead.

The information contained in this paper is based on or derived from information generally available to the public from sources believed to be reliable. No representation or warranty is made or implied that it is accurate or complete. Any opinions expressed in this paper are subject to change without notice. This paper has been prepared solely for information purposes and if so decided, for private circulation and does not constitute any solicitation to buy or sell any instrument, or to engage in any trading strategy.

Produced by London Branch - Nicole Elliott +44-20-7786-2509 (email: [Nicole.Elliott@mhcb.co.uk](mailto:Nicole.Elliott@mhcb.co.uk))

The information contained in this paper is based on or derived from information generally available to the public from sources believed to be reliable. No representation or warranty is made or implied that it is accurate or complete. Any opinions expressed in this paper are subject to change without notice. This paper has been prepared solely for information purposes and if so decided, for private circulation and does not constitute any solicitation to buy or sell any instrument, or to engage in any trading strategy.

Charts provided by Reuters.